



2007: TANK TOP

- 4.5 oz
- 100% Ring-Spun Cotton
- 52/48 RS Cotton/Poly
- Heather Grey: 90% RS Cotton/10% Poly
- Preshrunk Fabric
- Rib 1x1 Binding
- Double needle bottom and sleeve hems
- Seamless Sides
- Spectra tear away labels
- Standard cold wash & low tumble dry
- 100% NAFTA Compliant
- Designed in California, Made in Mexico
- Use poly ink and/or poly blocker for fabric with polyester



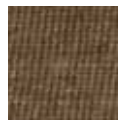
BLACK



WHITE



HEATHER GREY



BROWN HEATHER



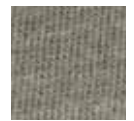
CHARCOAL HEATHER



KELLY HEATHER



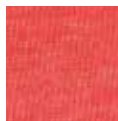
LIGHT BLUE HEATHER



MEDIUM GREY HEATHER



NAVY HEATHER



RED HEATHER



ROYAL HEATHER

| | XS | S | M | L | XL | 2XL | 3XL | 4XL | 5XL |
|------------------------------------|-------|-------|-------|----|-------|-------|-------|-----|-----|
| POM | 17 | 18 | 20 | 22 | 24 | 26 | 28 | | |
| Body Width 1" below armhole | 27 | 28 | 29 | 30 | 31 | 32 | 33 | | |
| Front neck Drop | 6 1/4 | 6 1/2 | 6 3/4 | 7 | 7 1/4 | 7 1/2 | 7 3/4 | | |

* all units in inches